

“Small hive beetle in Italy”

Franco Mutinelli

National Reference Laboratory for beekeeping
Istituto Zooprofilattico Sperimentale delle Venezie
Viale dell'Università, 10
35020 Legnaro (PD), Italy
E-mail: fmutinelli@izsvenezie.it

PAFF Committee, Sections Animal Health and Welfare & Controls and Import Conditions
Brussels, 7-8 October 2015

First identification of both larvae and adults

When:

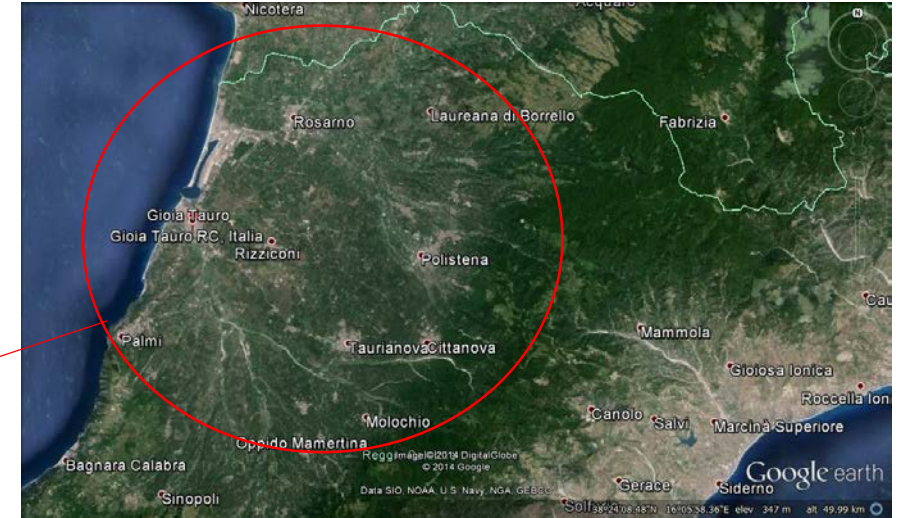
5th September 2014

Where:

Locality: Sovereto

Municipality: Gioia Tauro

Province: Reggio Calabria

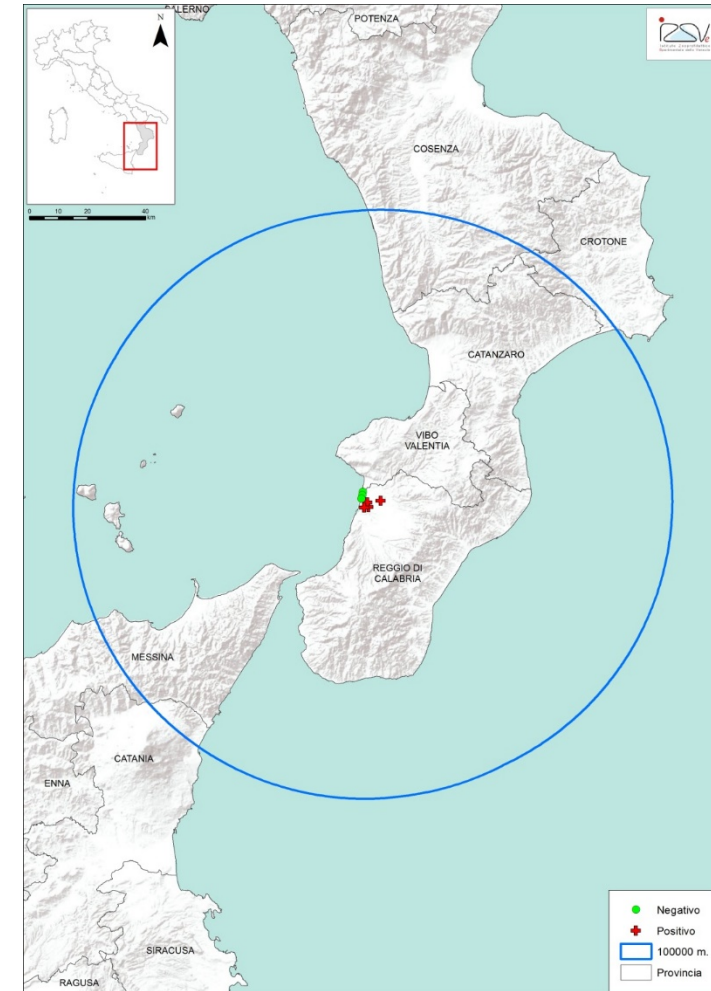


- Protection zone - 20 km radius
- Surveillance zone - 100 km radius

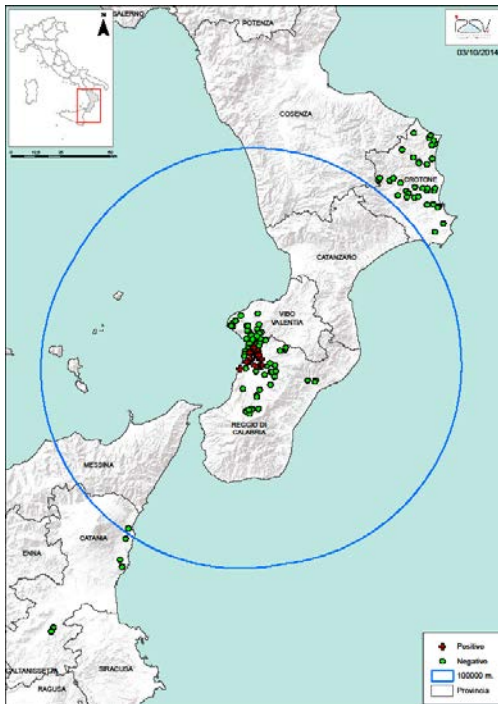
Protection zone = 20 km



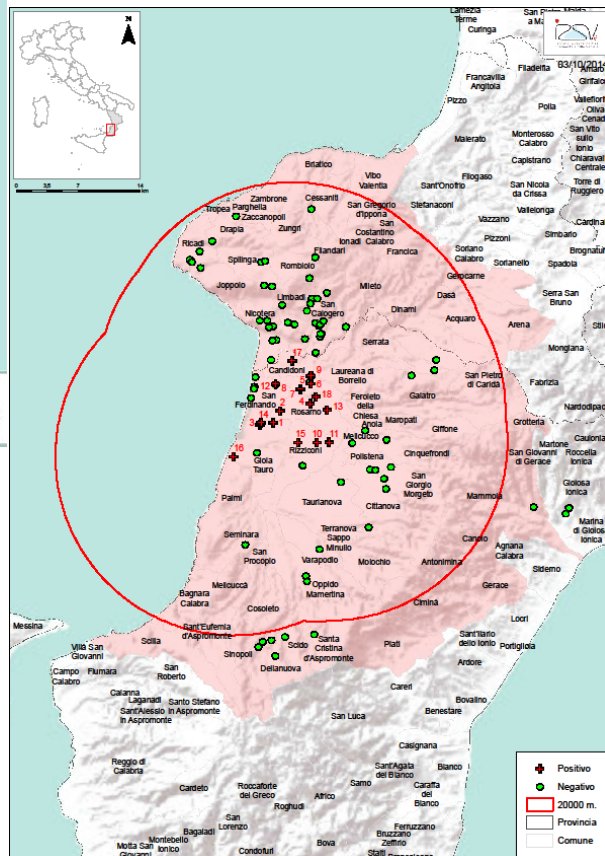
Surveillance zone = 100 km



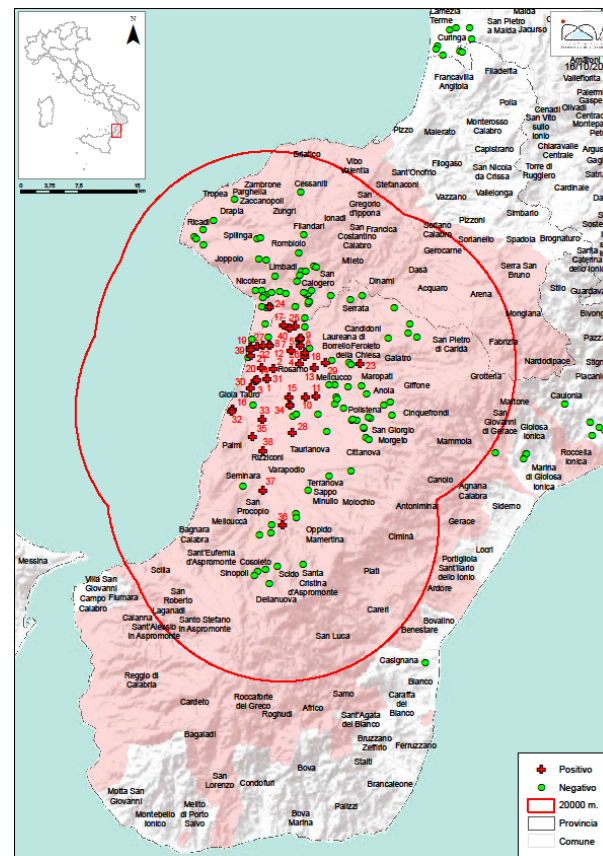
24 September 2014



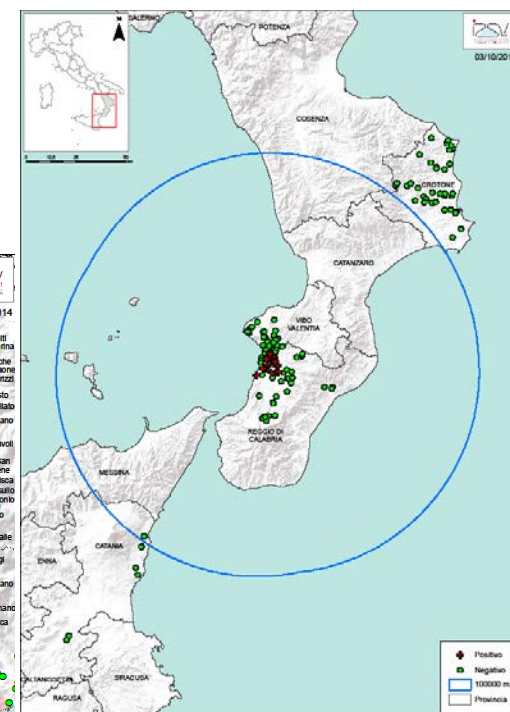
Protection zone = 20 km



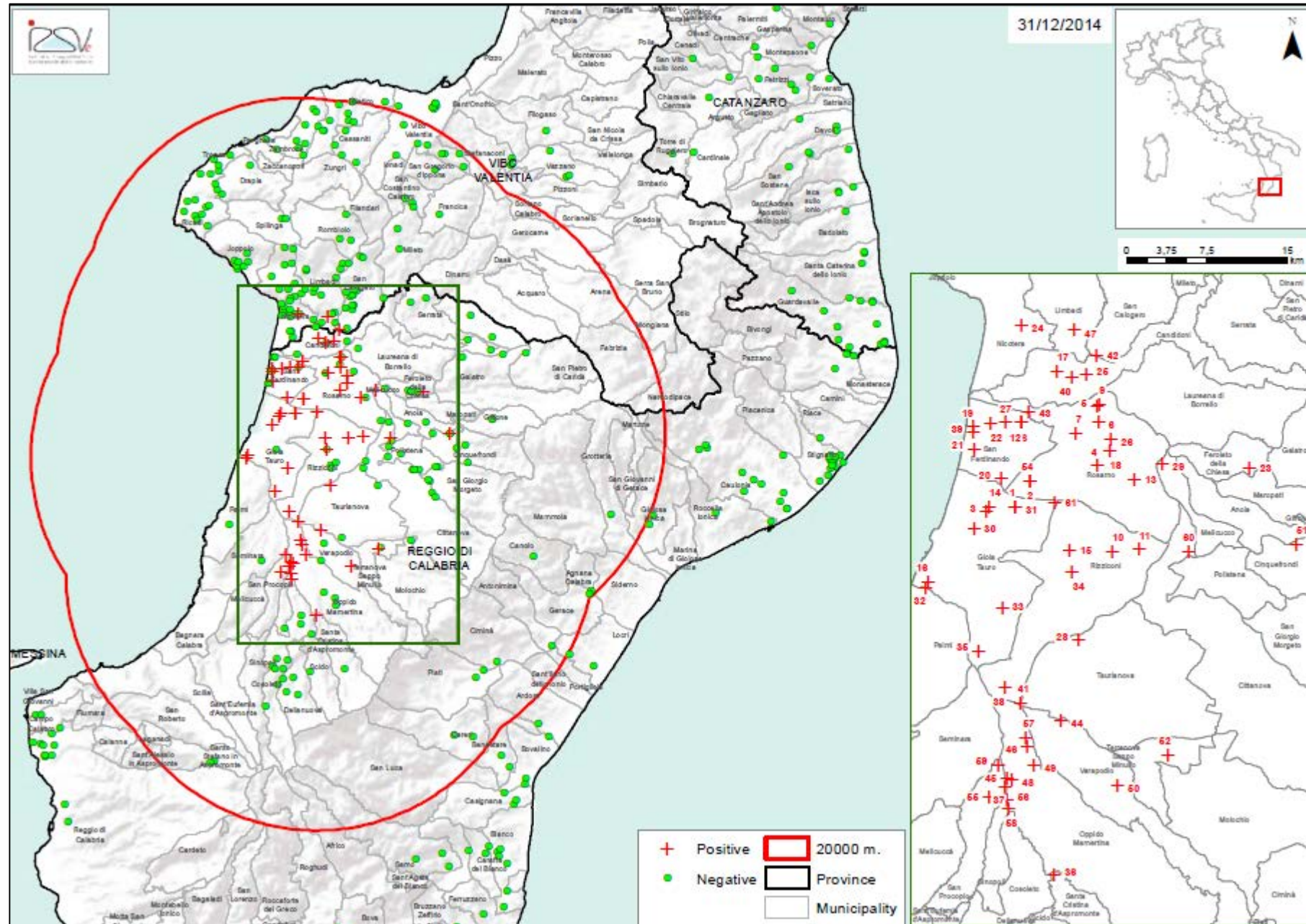
3 October 2014



16 October 2014



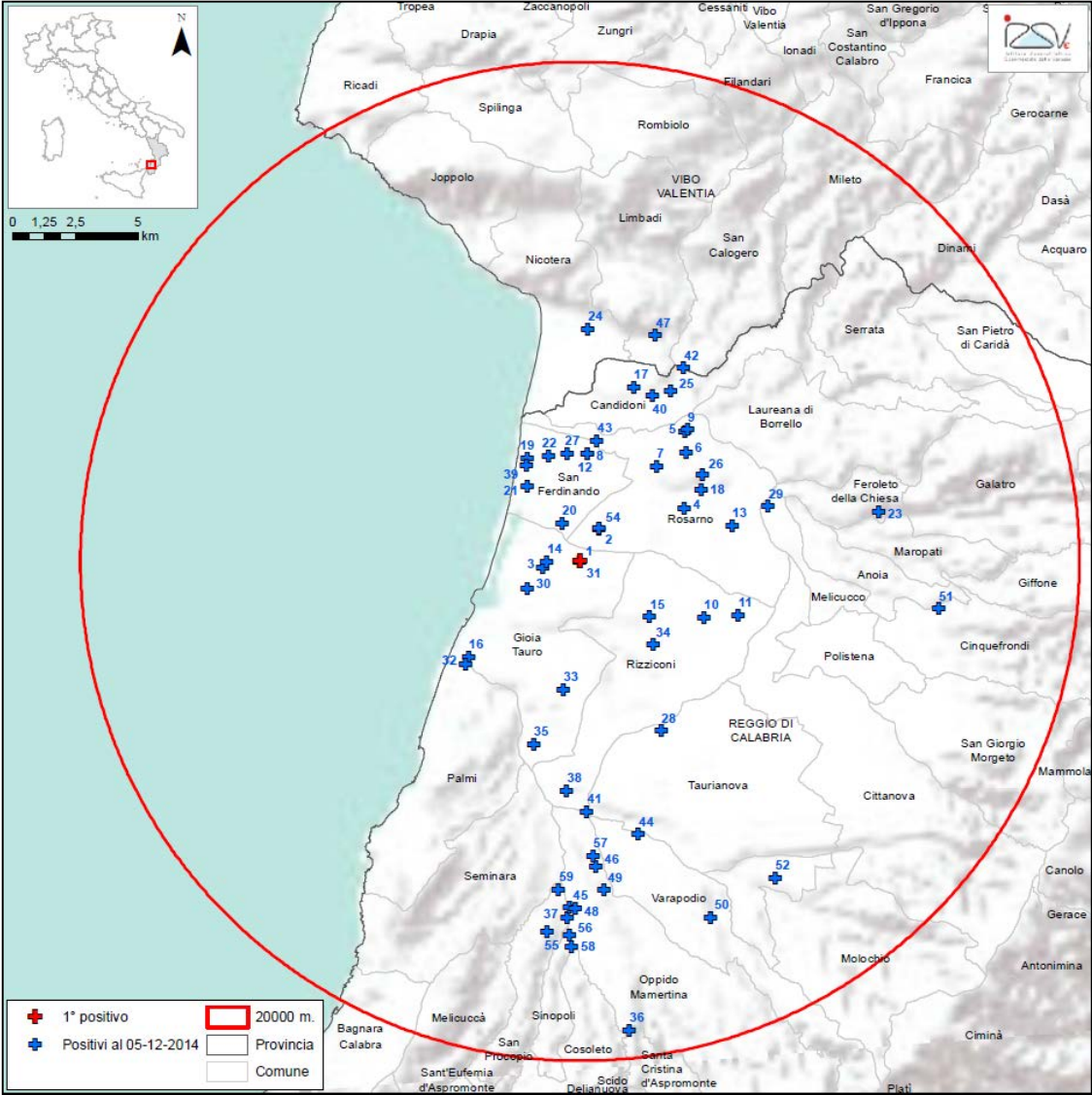
Calabria region



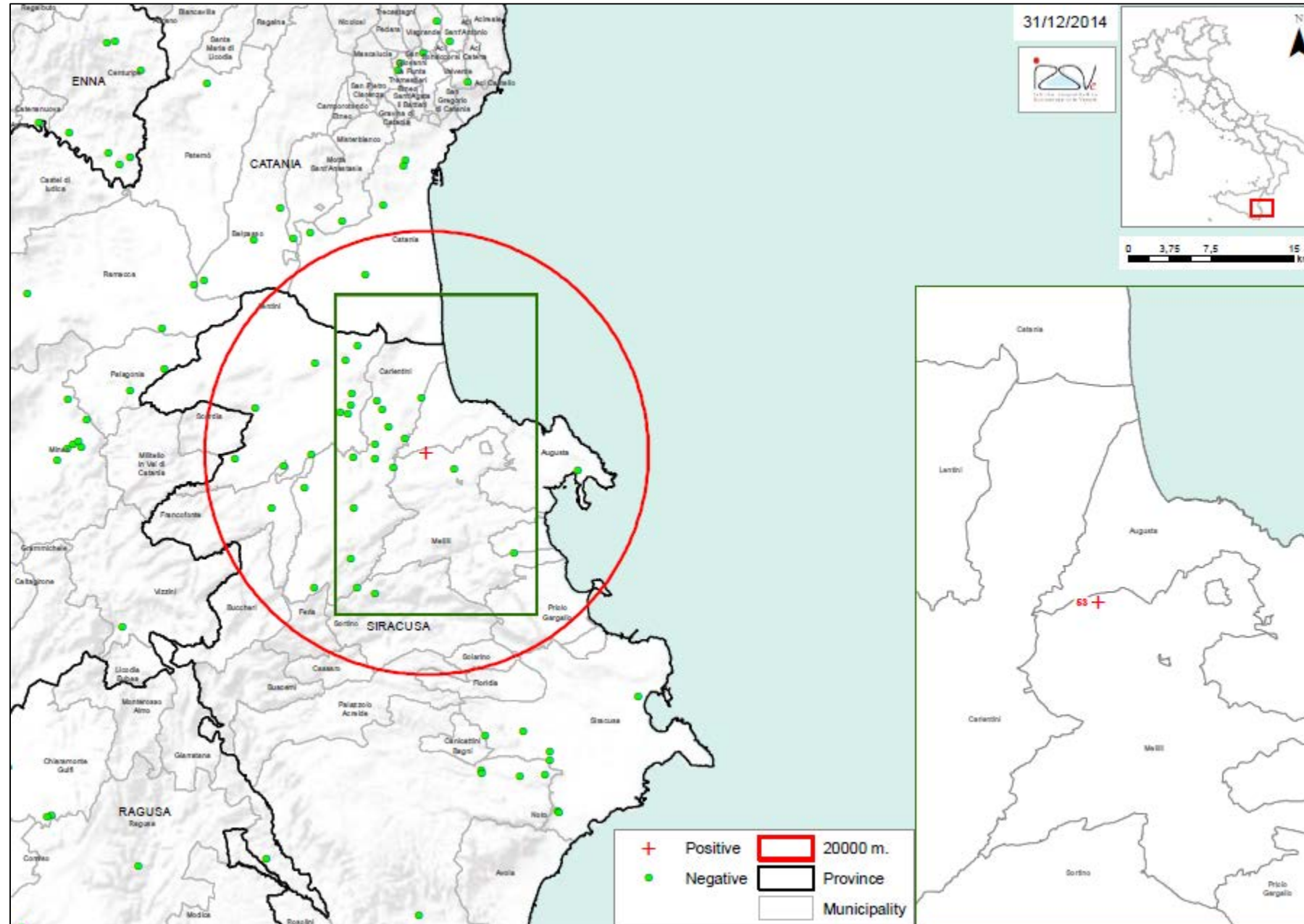
Calabria region - Positive sites

<10 km = 41 sites

>10 < 20 km = 17 sites



Sicily region - 7 November 2014



- Melilli (SR) municipality
- migratory apiary with 56 hives
- in the Gioia Tauro area from April to August 2014

Surveillance 2014

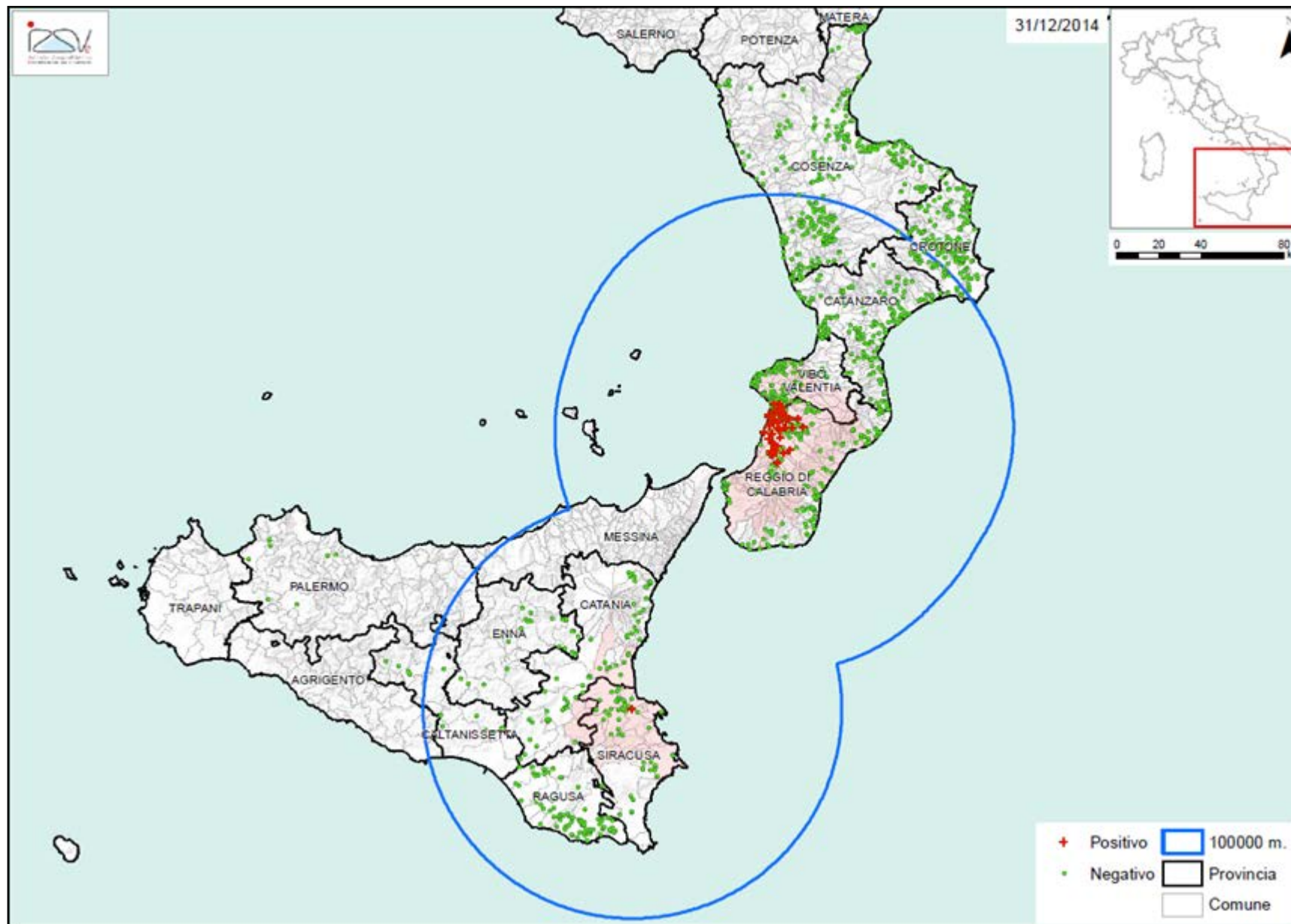
(n. of inspected apiaries = negative/positive)

	Negative	Positive
<i>Calabria region</i>		
Catanzaro	181	0
Cosenza	300	0
Crotone	212	0
Reggio Calabria	196	57
Vibo Valentia	140	3
Total	1029	60
<i>Sicilia region</i>		
Catania	60	0
Caltanissetta	13	0
Enna	23	0
Palermo	7	0
Ragusa	79	0
Siracusa	46	1
Total	228	1
Gross total	1257	61



31 December 2014

Calabria and Sicily regions - Surveillance zone and results of surveillance activity from September to December 2014



Measures adopted by the Ministry of Health

2014

0018842-P-12/09/2014: first detection in Calabria

0019258-19/09/2014-DGSAF-COD_UO-P: second outbreak, EU RL confirmation

0020069-01/10/2014-DGSAF-COD_UO-P: surveillance in not infested regions

0020298-03/10/2014-DGSAF-COD_UO-P: update on outbreaks

0023341-P-07/11/2014-DGSAF: first detection in Sicily

MINISTERO DELLA SALUTE DECRETO 19 November 2014 Extraordinary measures to eradicate and to compensate beekeepers following the infestation due to *Aethina tumida*. (14A09715) (GU n. 294 del 19-12-2014)

2015

0000969-16/01/2015-DGSAF-COD_UO-P: reduction of surveillance activity according to the Winter season

0003810-16/02/2015-DGSAF-COD_UO-P: movement of honey bees in the surveillance and restriction zones

0005637-05/03/2015-DGSAF-COD_UO-P: resume of surveillance activity in the territory of Calabria region according to the new beekeeping season

0007104-19/03/2015-DGSAF-COD_UO-P: national surveillance program according to EU guidelines

0008311-31/03/2015-DGSAF-COD_UO-P: surveillance activity in the territory of Sicily region

0010658-23/04/2015-DGSAF-COD_UO-P: swarm production in the infested zone

0012686-13/05/2015-DGSAF-COD_UO-P: surveillance activity in the territory of Calabria region

0012688-13/05/2015-DGSAF-COD_UO-P: surveillance activity in the territory of Sicily region (addendum)

0015320-09/06/2015-DGSAF-COD_UO-P: management of commercial bumblebee colonies

0022693-07/09/2015-DGSAF-COD_UO-P: sentinel nucs in Calabria region

0022698-07/09/2015-DGSAF-COD_UO-P: sentinel nucs in Sicily region

0024054-22/09/2015-DGSAF-COD_UO-P: detection of SHB in Taurianova municipality (RC)

Information available at: <http://www.izsvenezie.com/aethina-tumida-in-italy/>

Measures applied

- Immediate notification of *Aethina tumida*
- Restriction of any movement related to honey bee colonies (IN and OUT)
- Census of apiaries and colonies

20 km protection zone:

- census of apiaries
- visit of all apiaries
- visit of the colonies according to 5% expected prevalence
- destruction of the infested apiaries (@3,200 hives) and compensation
- if negative, traps should be applied
- traceability of commercial and migratory movement in and out of the zone



@ASP RC



Measures applied

100 km surveillance zone:

- census of apiaries
- visit of apiaries selected on the basis of risk analysis (migration in infested areas, honeybees or materials exchanges) or randomly
- visit of the colonies according to 2% expected prevalence
- destruction of infested apiaries
- if negative, traps should be applied
- traceability of commercial and migratory movement in and out of the zone

 No positive apiaries in the surveillance zone

COMMISSION IMPLEMENTING DECISION

of 12 December 2014

concerning certain protective measures with regard to confirmed occurrences of the small hive beetle in Italy

*(notified under document C(2014) 9415)**(Only the Italian text is authentic)**(Text with EEA relevance)*

Article 3

1. Italy shall ensure that the following protective measures are implemented in the areas listed in the Annex:
- (a) a ban on the dispatch of consignments of the following commodities from the areas listed in the Annex to other areas of the Union:
- (i) honey bees;
 - (ii) bumblebees;
 - (iii) unprocessed apiculture by-products;
 - (iv) beekeeping equipment;
 - (v) comb honey intended for human consumption;

ANNEX

Member State	Areas subject to protective measures
Italy	Region of Calabria: whole Region
	Region of Sicily: whole Region

2015

Surveillance activity

SHB surveillance program - Italy - 2015

According to the “Guidelines for the surveillance of the small hive beetle (*Aethina tumida*) infestation” released by the EU RL for honey bee health in March 2015

A surveillance program for the whole territory of Italy has been prepared based on:

- ✓ Clinical inspection,
- ✓ to be carried out in Spring 2015,

Territory	Epidemiological units	N. apiaries	N. hives for apiary
Italy (excluded Calabria and Sicily)	Nord	164 non migratory random selected (expected prevalence 2% CI 95%)	expected prevalence 2% CI 95%
	Centre	164 non migratory random selected (expected prevalence 2% CI 95%)	expected prevalence 2% CI 95%
	South	164 non migratory random selected (expected prevalence 2% CI 95%)	expected prevalence 2% CI 95%

In addition, a clinical inspection of the apiaries once back from migratory period based on risk evaluation + traps application

SHB surveillance program - Sicily - 2015

According to the “Guidelines for the surveillance of the small hive beetle (*Aethina tumida*) infestation” released by the EU RL for honey bee health in March 2015

A surveillance program for the territory of Sicily has been prepared based on:

- ✓ clinical inspection to be carried out in Spring 2015
- ✓ Data should be provided by the May 10th.

Note: 0008311-31/03/2015-DGSAF-COD_UO-P: surveillance activity in the territory of Sicily region

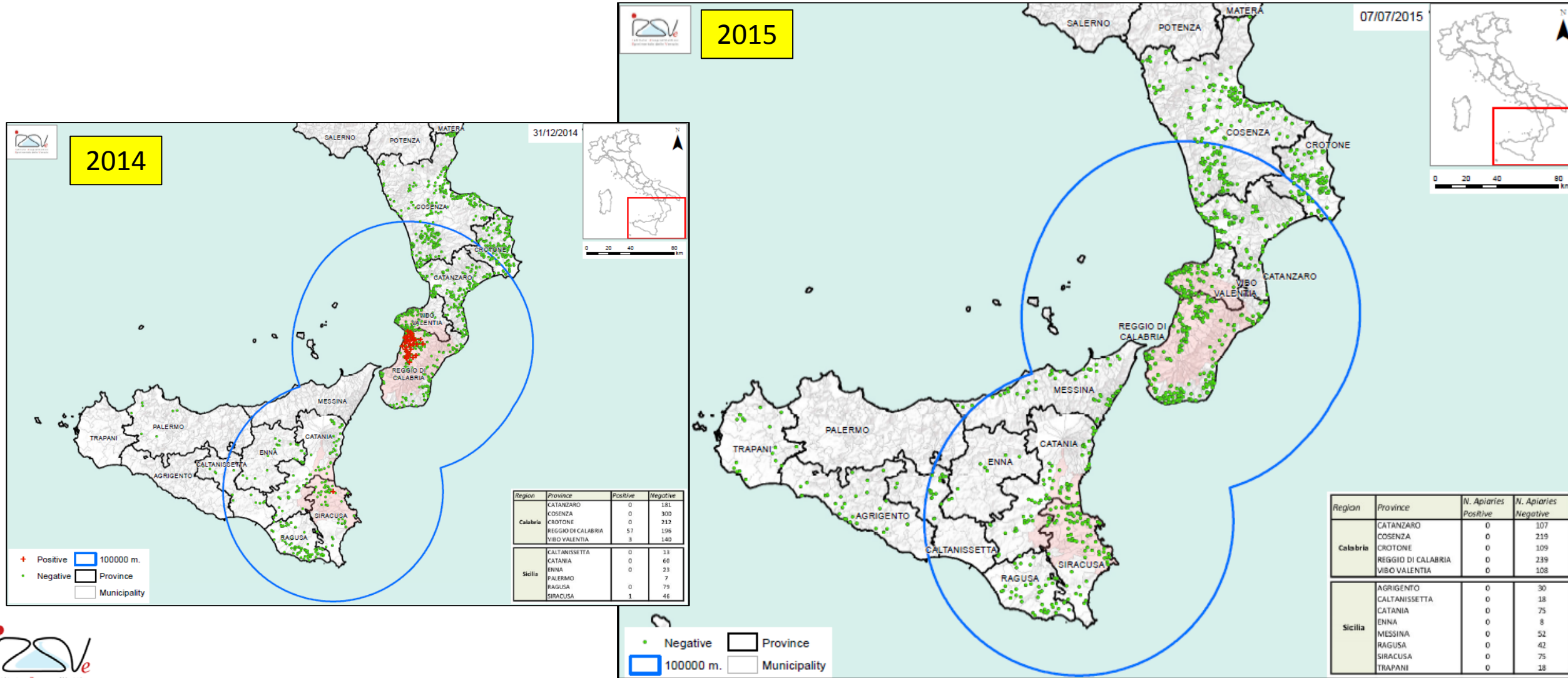
Region	Territory/zones	N. apiaries	N. hives for apiary
Sicily	Catania Siracusa Ragusa	164 non migratory random selected (expected prevalence 2% CI 95%)	expected prevalence 5% CI 95%
	rest of territory	164 non migratory random selected (expected prevalence 2% CI 95%)	expected prevalence 5% CI 95%

SHB surveillance program - Calabria- 2015

Surveillance activity will continue in the whole territory of Calabria as previously established:

Region	Territory/zones	N.apiaries	N. hives for apiary
Calabria	protection zone	all apiaries	expected prevalence 5% CI 95%
	surveillance zone + the rest of territory	164 random (expected prevalence 2% CI 95%)	expected prevalence 5% CI 95%

Calabria and Sicily regions - Surveillance zone and results of surveillance from 1 January to 30 August 2015



COMMISSION IMPLEMENTING DECISION (EU) 2015/838**of 28 May 2015****amending Implementing Decision 2014/909/EU by extending the period of application of the protection measures in relation to the small hive beetle in Italy***(notified under document C(2015) 3558)***(Only the Italian text is authentic)****(Text with EEA relevance)***Article 1*

Article 4 of Implementing Decision 2014/909/EU is replaced by the following:

‘Article 4

This Decision shall apply until 30 November 2015.’

SHB re-occurrence – September 2015

September 16, 2015

One apiary in Taurianova municipality
30 artificial swarms (6.08.15) + 2 natural swarms
(captured on site, 16 and 22.08.15)

September 28, 2015

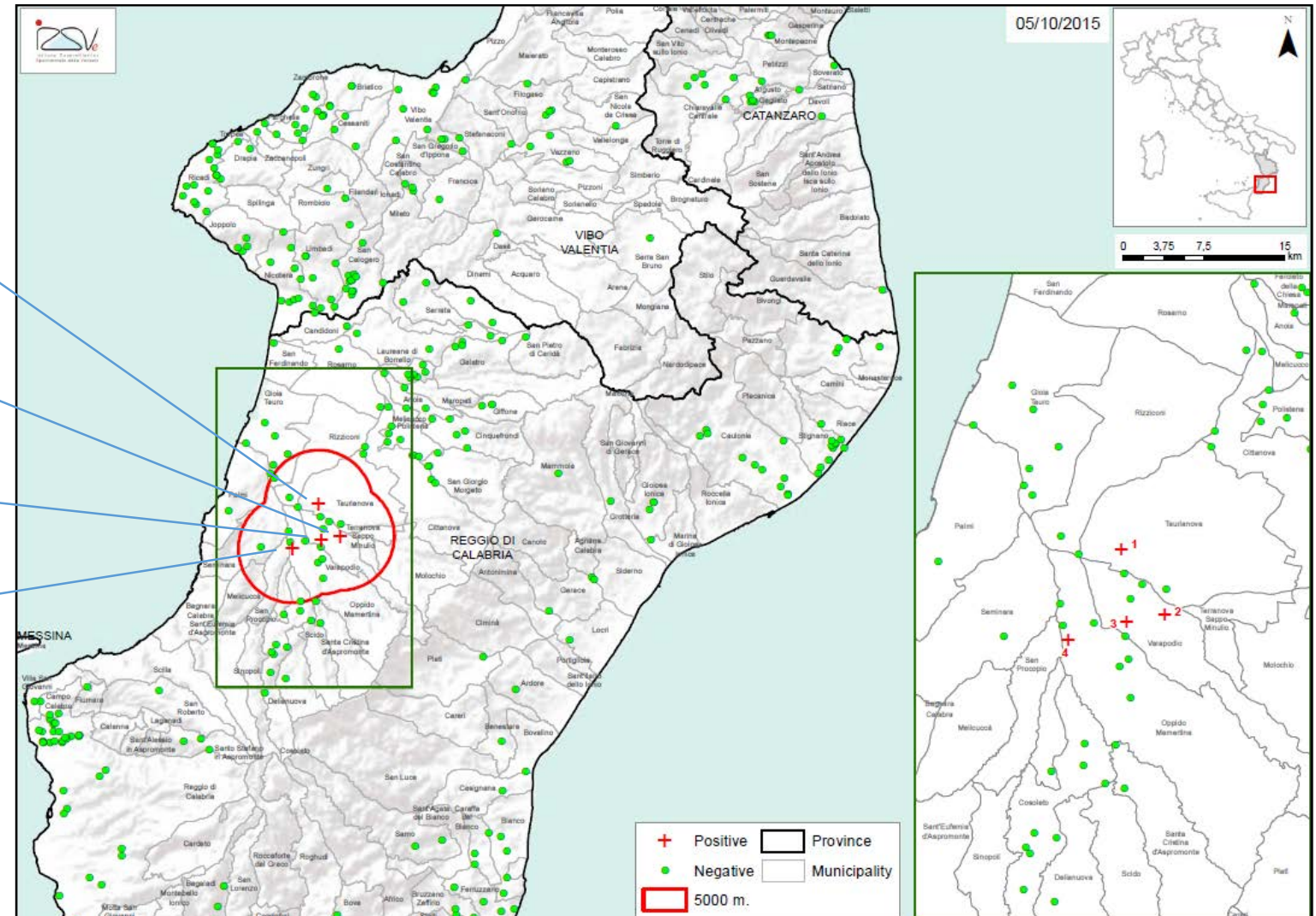
One apiary in Varapodio municipality
66 beehives

September 28, 2015

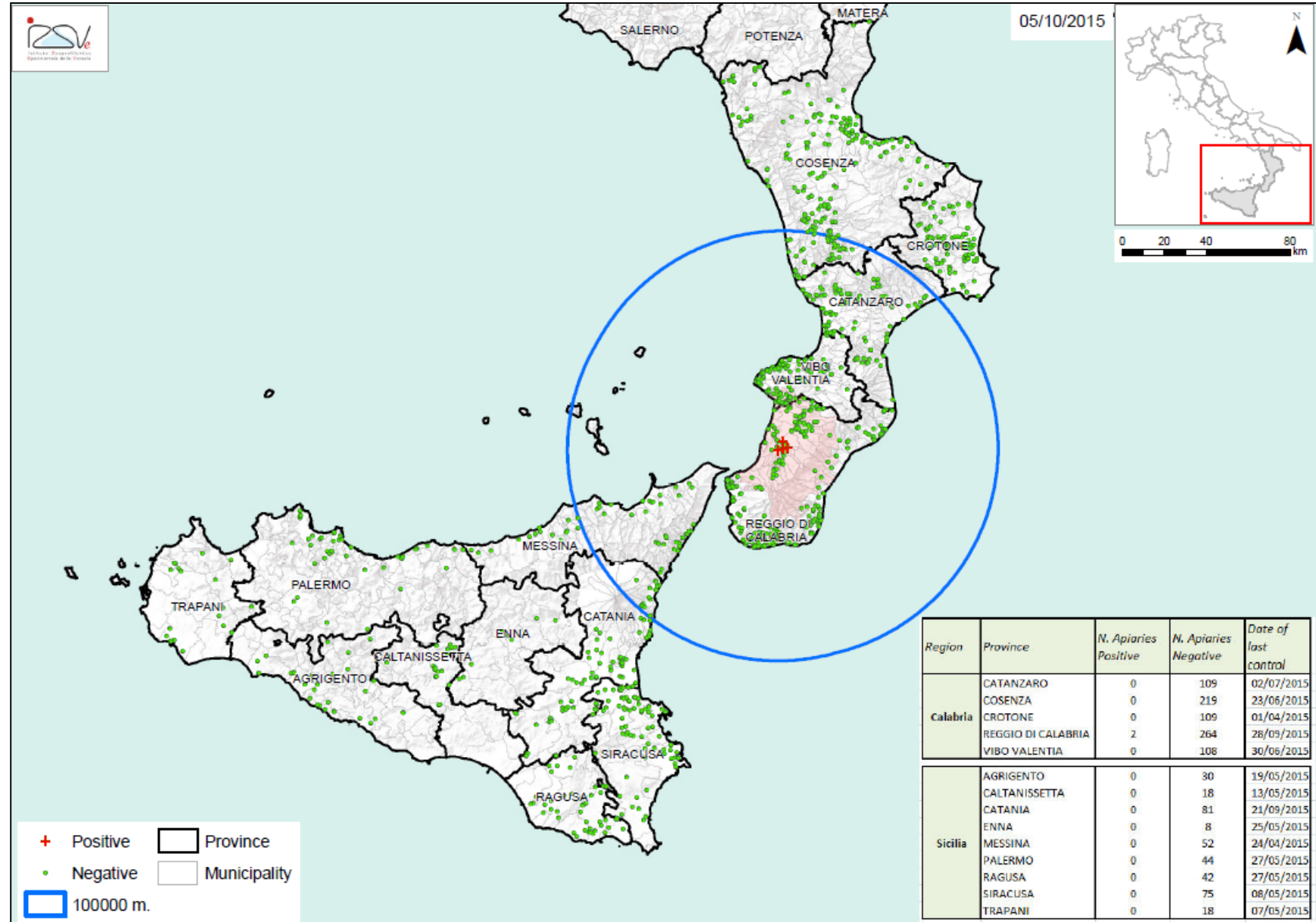
One apiary in Varapodio municipality
92 beehives

September 29, 2015

One apiary in Oppido Mamartina municipality
60 swarms (27.04.15)



The situation as of October 5, 2015



Aethina tumida – differential diagnosis

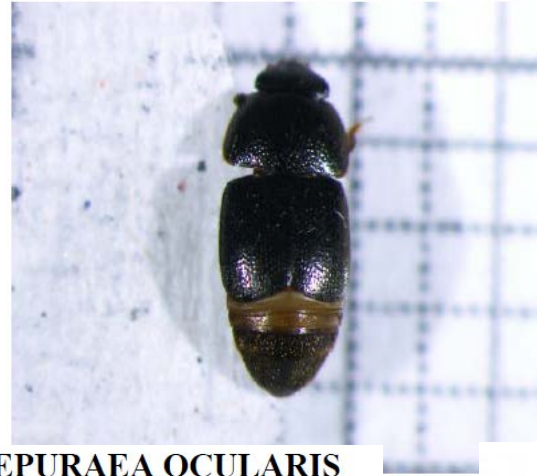
STELIDOTA GEMINATA



CARPOPHILUS SPP.



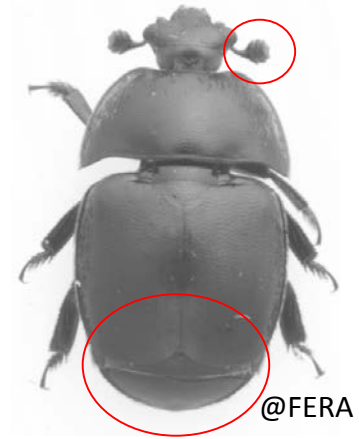
COLOPTERUS ABDOMINALIS



EPURAEA OCULARIS



EPURAEA LUTEOLA



CARPOPHILUS NEPOS



CARPOPHILUS MUTILATUS



UROPHORUS HUMERALIS

(Mutinelli et al., 2015)

Calabria: December 2014 – January 2015, July 2015: beetles collected on rotting Citrus and lime



Thank you for your attention

